

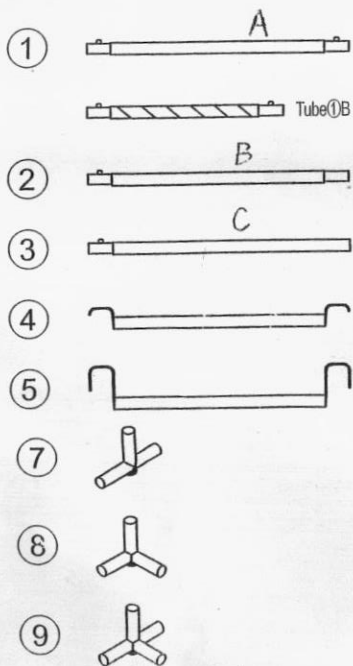
Step 1

GROW TENT -

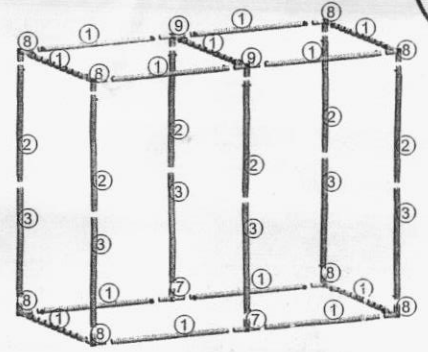
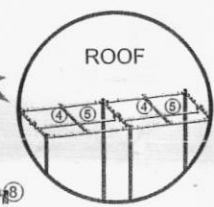
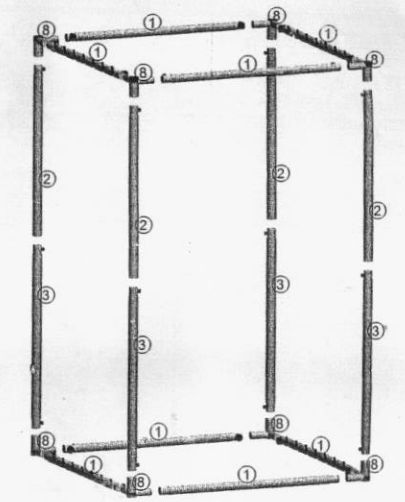
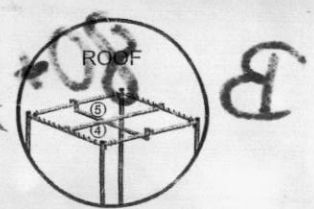
Tent Size	Tube①	Tube①B	Tube②	Tube③	Tube④	Tube⑤	Joint⑦	Joint⑧	Joint⑨
120*120*200	x8		x4	x4	x1	x2		x8	
120*60*150	x4	x4	x4	x4	x1	x2		x8	
120*90*150	x4	x4	x4	x4	x1	x2		x8	
120*60*180	x4	x4	x4	x4	x1	x2		x8	
90*50*160	x4	x4	x4	x4	x1	x2		x8	
90*90*180	x8		x4	x4	x1	x1		x8	
80*80*160	x8		x4	x4	x1	x1		x8	
60*60*120	x8		x4	x4	x1	x1		x8	
150*150*200	x8		x4	x4	x1	x2		x8	
240*120*200	x13		x6	x6	x2	x4	x2	x8	x2
300*150*200	x13		x6	x6	x2	x4	x2	x8	x2
100*100*200	x8		x4	x4	x1	x2		x8	

Please check the corresponding component quantity listed on the table according to the Item No. you have purchased.

ASSEMBLING THE FRAME



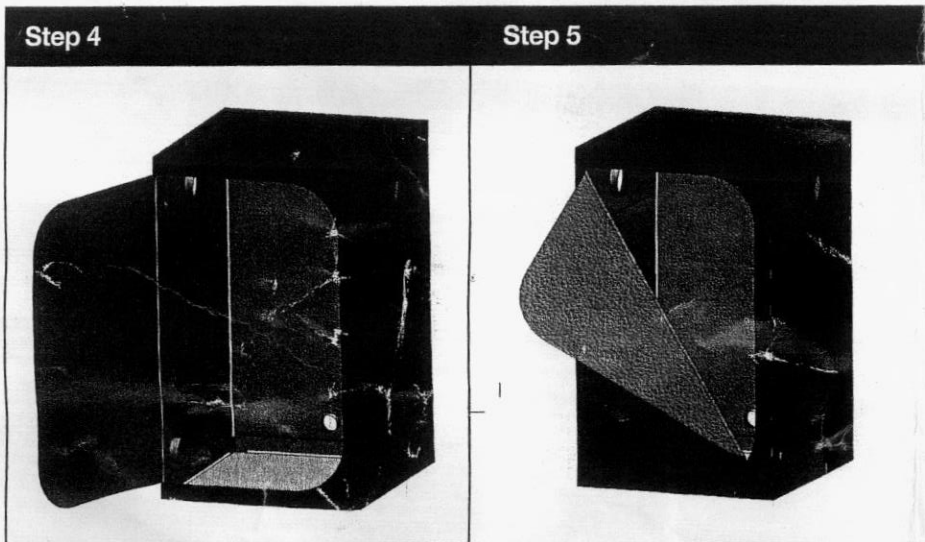
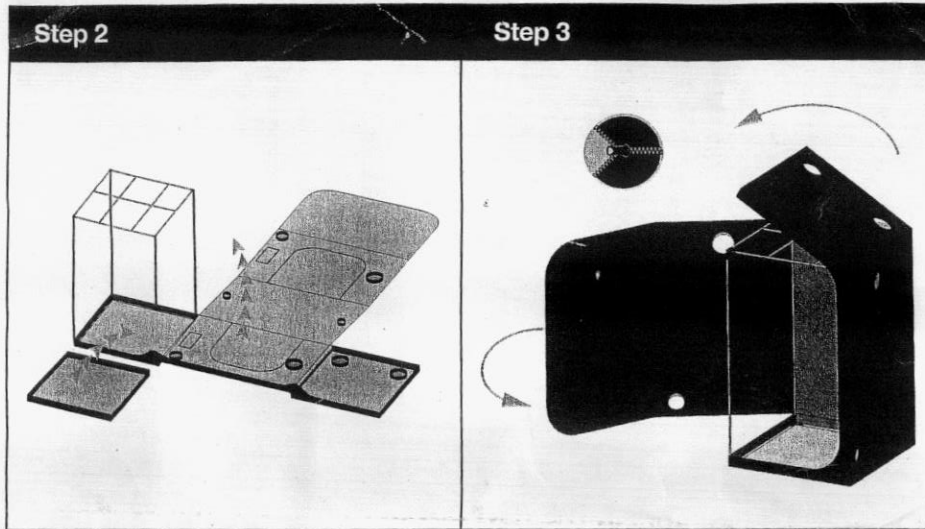
Part Tube①B/C you receive is pure white just like Tube①. The slash or grid marked on the image will help you to distinguish between them.



- Assemble the bottom frame. Take two Tube①, two Tube①B, four Tube③ and four Joint⑧ and attach them together, forming the bottom frame.
- Fit four Tube② into the bottom frame. Afterwards, take two Tube①, two Tube② and four Joint⑧ to form the roof frame.
- Attach the roof frame onto the assembled frame and then mount one Tube④ as well as two Tube⑤ onto the roof.

B 80x80

Pull the grow tent outer canvas over the constructed framework.



08x08 E

IDAODAN

ATTACHING THE TENT COVER

- Unzip all zippers of the tent cover all the way. Put frame upright on the base of the tent, making sure that all four corners are inside the base.
- Gently pull up the back of the tent cover such that the two upper back corners of the cover are squarely in place. Note that having a helper makes this process easier. And then, gently pull the "roof" of the tent to cover the two upper front corners.
- Gently wriggle/adjust all eight corners until cover is square against the frame.
- Close all zippers. All parts have been assembled, and the grow tent is ready to be used.

PLEASE FOLLOW THE ABOVE STEPS THOROUGHLY WHEN ATTACHING THE TENT COVER TO AVOID IMPROPER ASSEMBLY.

